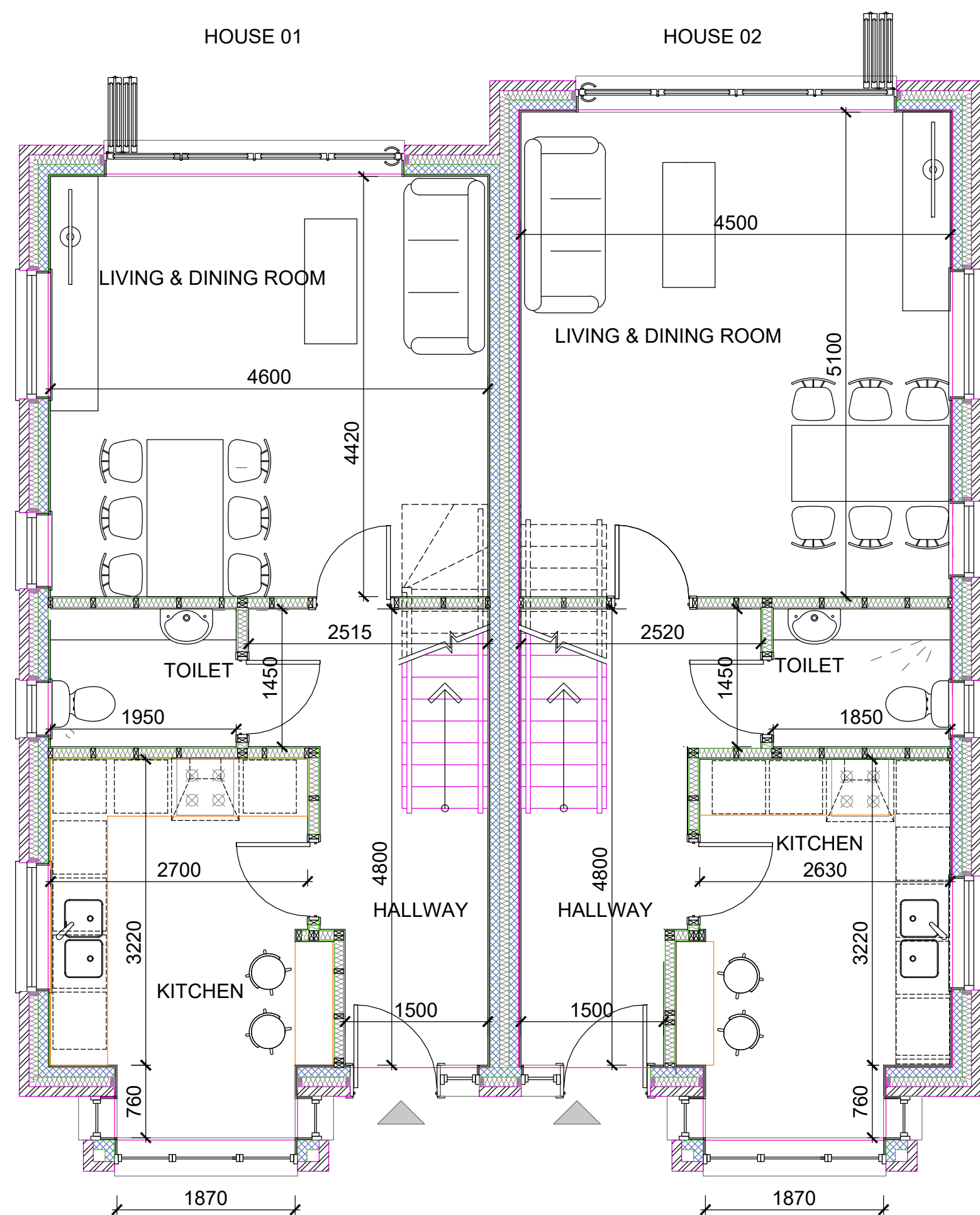


Figured dimensions only are to be used.
All dimensions to be checked on site.
Differences between drawings and between
drawings and specification to be reported to
FORM Design Group Ltd.
© the copyright of the drawing and designs
contained therein remains vested in
FORM Design Group Ltd..
Hersham Place Technology Park,
Walton on Thames, Surrey. KT12 4RZ

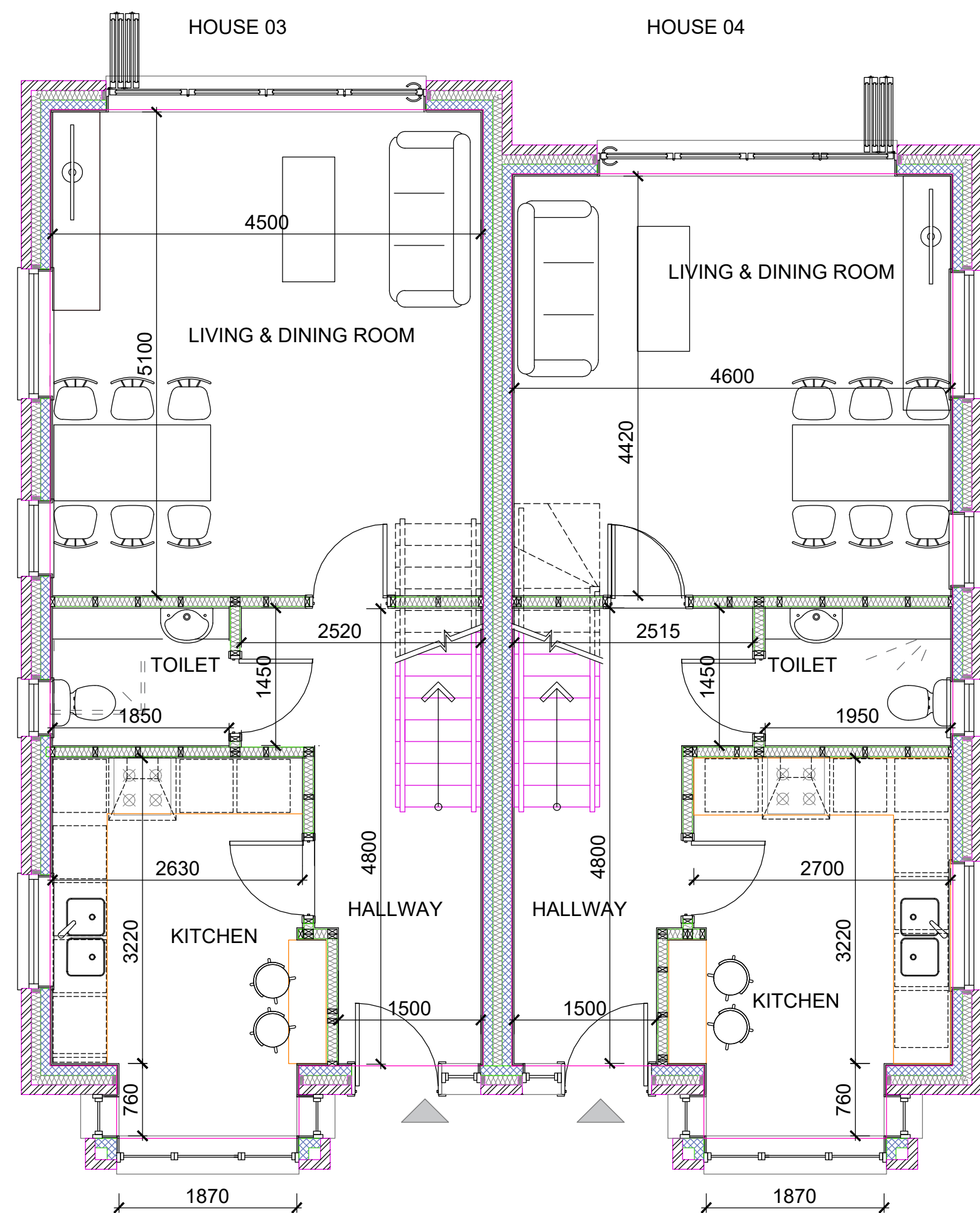
Revisions:



HOUSE 01, GROUND FLOOR
GROSS INTERNAL AREA
44.40M²

HOUSE 02, GROUND FLOOR
GROSS INTERNAL AREA
46.65M²

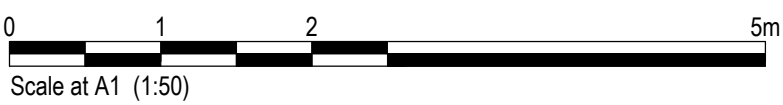
GROUND FLOOR PLAN, HOUSE 01 AND 02



HOUSE 03, GROUND FLOOR
GROSS INTERNAL AREA
46.65M²

HOUSE 04, GROUND FLOOR
GROSS INTERNAL AREA
44.40M²

GROUND FLOOR PLAN, HOUSE 03 AND 04



Hersham Place Technology Park,
Walton on Thames, Surrey. KT12 4RZ
T: 01932 213249
E: info@formdesigngroup.co.uk

- Architecture
- Planning
- Structures
- Landscape
- Interiors